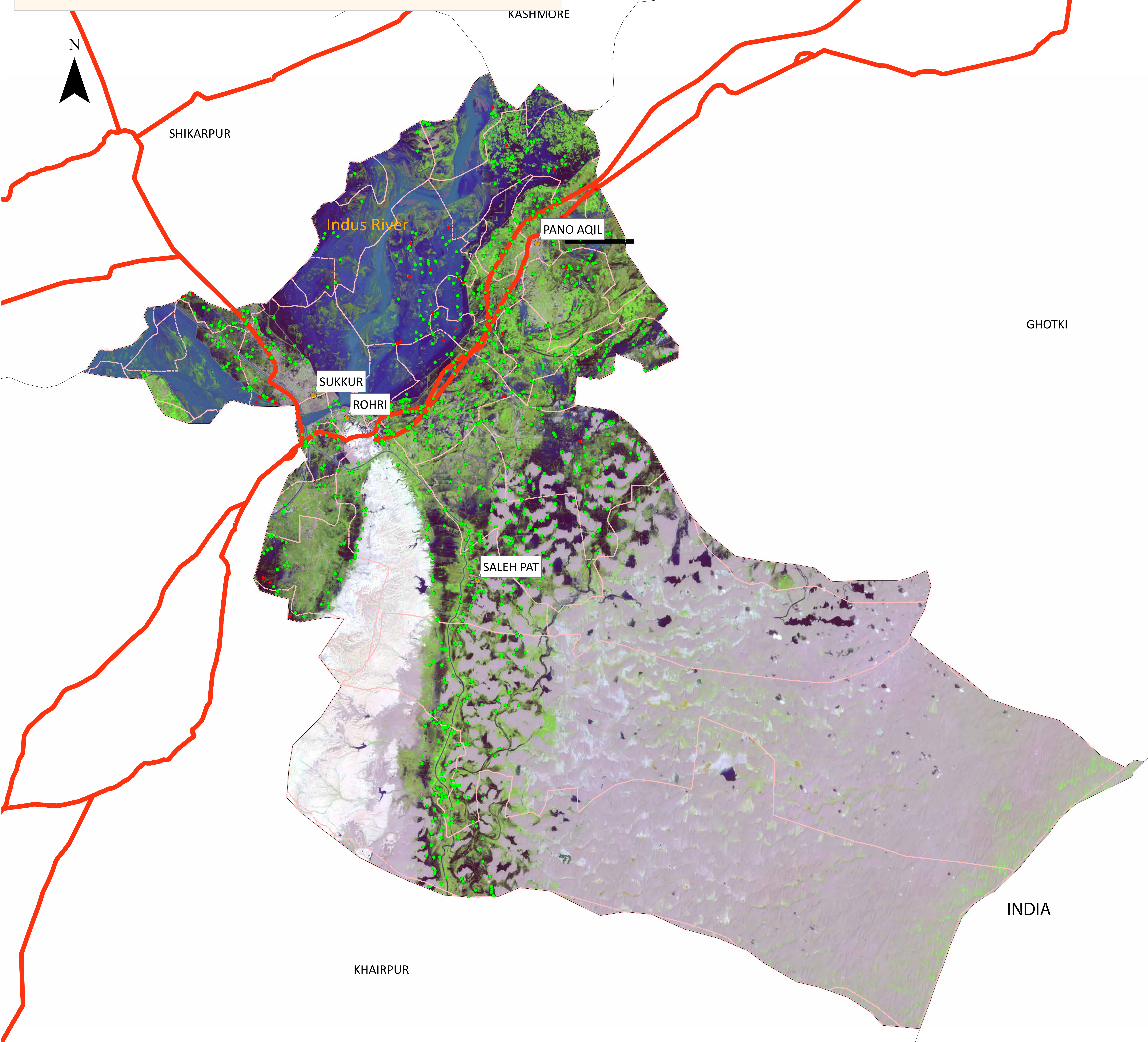


Flood Inundation in Sukkur District



District Profile			
	28/08/2022	06/09/2022	Change
District Area		5,212.05 Sq.Km	
Area Inundated	826.92 Sq.Km 15.87%	768.06 Sq.Km 14.74%	-58.86
Crop Land	431,510.13 Acres		
Crop Land Inundated	132,439.46 Acres 30.69%	121,474.58 Acres 28.15%	-10,964.88
Rainfall (Jul-Aug)	689 mm		
Population (as per 2017 Census)	1,416,507		
Affected Union Councils	42 Out of 42	42 out of 42	

UC-wise Affected Villages						
Name	Submerged in Water			Surrounded by Water		
	28/08/2022	06/09/2022	Change	28/08/2022	06/09/2022	Change
NAURAJA	12	8	-4	37	38	+1
TAMACHANI	6	5	-1	70	66	-4
PANHWAR	5	3	-2	107	99	-8
SADHUJA	4	3	-1	82	67	-15
SANGRAR	3	-	-3	84	84	0
DARI (GHOUSPUR)	2	-	-2	3	3	0
TRIMUNH	2	2	0	82	31	-51
ARORE	1	-	-1	80	88	+8
BAIJI	1	-	-1	20	20	0
DHANDHI	1	1	0	90	85	-5
HINGORO	1	1	0	40	37	-3
LAL JURYO KHAN SHAN	1	-	-1	60	73	+13
MEHMOODA BAGH	1	1	0	12	12	0
NINDAPUR	1	1	0	54	32	-22
SHADI SHAHEED	1	1	0	6	3	-3
SULTANPUR	1	1	0	54	34	-20
ALI WAHAN	-	1	+1	5	4	-1
JUNAS	-	1	+1	51	41	-10
KANDHRA	-	-	0	18	9	-9
KOT MIR MOHAMMAD	-	-	0	5	-	-5
LOUNG BHATTI	-	-	0	23	32	+9
MUBARAKPUR	-	-	0	51	54	+3
PATNI	-	-	0	6	14	+8
SALEHPAT	-	-	0	4	3	-1
SANGI	-	1	+1	34	34	0
SEHWANI	-	-	0	1	1	0
SIKANDERABAD	-	-	0	1	1	0
TARAI	-	-	0	60	76	+16
LAKHI	-	1	+1	-	-	0
Total	43	31	-12	1,140	1,041	-99

Disclaimer: 30m resolution satellite image has been used for preliminary damage assessment and depicts status of flood inundation as of image acquisition date. The current situation is based on image acquisition date and depicts. The Union Council boundaries in names used in development of this product were obtained from Board of Revenue, Sindh.

Source: Landsat 9 Collection 2, 06 September 2022 5: 50 GMT

